



**INTERSHIP MARITIME INC.**

*Technical Services*

14, SKOUZE STREET · 185 36 PIRAEUS · GREECE  
TEL: +30 210 428 7370 · FAX: +30 210 428 7372  
Email: [contact@intership.gr](mailto:contact@intership.gr) · website: [www.intership.gr](http://www.intership.gr)



**INTERSHIP MARITIME INC.**

*Technical Services*

Intership Maritime Inc. is a Technical Services company based in Piraeus in Greece since 1994, specialising in newbuilding and conversion programmes.

Intership operates through a worldwide network of principals, regarding newbuilding and service. Further, maritime consulting, inspection, newbuilding specifications, etc. are often practised. Turnkey solutions including classification work are often done. Sea-trials for better accuracy, 3D scanning for hull, propeller and appendices.

Systems that can be purchased through our company are: steering gear, deck equipment, emergency towing systems for tankers, marine incinerators, oil discharge monitoring & control systems, bilge water separators, fresh water sterilisation & filtration, biological sewage treatment plants, propellers, energy saving devices and rudders.

## SYSTEMS & SPARE PARTS



Incinerators



Manoeuvring Systems (Full Spade Rudders , Flap Rudder etc.)  
Energy Saving Devices (ESD) , Mewis Duct - MD®



Quick Closing Valves  
Pumps Actuators  
Tank Level Gauging



Bilge Water Separators  
Engine Room Pumps



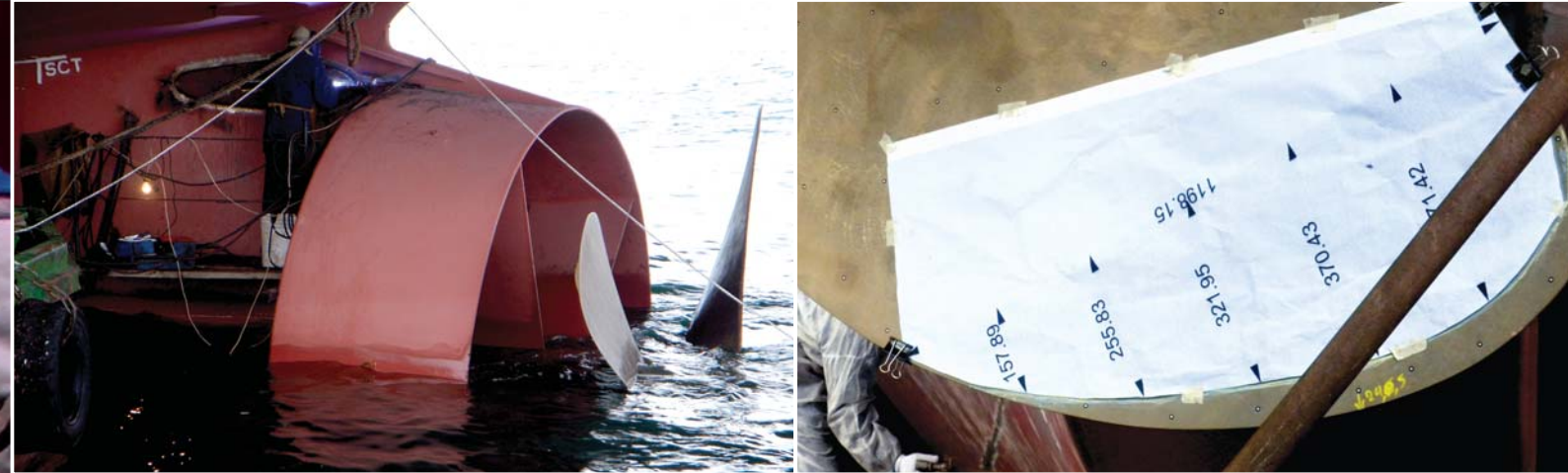
Bilge Water Separators  
Water Hardening / Rehardening Filters  
Sterilizers  
Sewage Treatment Plants  
Oil Discharge Monitor



Tank Level Gauging (METRITAPE)



Propellers Design, Production & Repairs



## NEWBUILDINGS

- Propulsion Consultancy
- Tank Test Consultancy
- Main Engine Selection
- Propeller design
- Propeller-Main Engine Matching
- Sea Trials Consultancy
- Shipyard Negotiations on Propulsion
- Manoeuvring

## REPAIR ACTIVITIES

- Propeller Cropping & Repairs
- Energy Saving Devices (ESD) Fitting
- Water Ballast Treatment Systems installation

## REVERSE ENGINEERING VIA 3D SCANNING (USING RHINOCEROS®)

- Hull Lines & Rudder Blade drawing production
- Propeller Offset production
- Comparison of Designed /Manufactured Hull, Rudder & Propeller
- Engine Room 3D scanning for Water Ballast Treatment Systems installation
- Hull 3D scan (using FARO® scanner & software)
- Propeller 3D scan (using Vicrascan® scanner)
- Mesh Production (using Geomagic®/Solidworks®)
- Complete Propeller Reconstruction

